

Note: This is our 2024 Hurricane Plan for Progressive Insurance. Some information is blanked out for privacy.

Sample: Storm Preparedness Checklist

"Kissed Some Frogs," Palm Coast, FL 32137

Revised: February 1st, 2024

Contact Information:

Owner:

Thomas Lahey, ** ***** **, Palm Coast, FL 32137

Cell: ###-###-####

Vessel Information:

2006 Beneteau Swift Trawler 42

Length Overall: 44.3'

Hull ID #: USBFN0000000

Port Engine Serial #: 56303 Transmission: 38292

Starboard Engine Serial #: 56298 Transmission: 38296

Insurance Information:

Progressive Insurance

Policy #: 94000000000

Valid: April 01, 2024 - April 1, 2025

Storm Preparation Locker Contents:

- 4 *25' 3/4 dock line
- 4 * 50' 3/4 dock line
- 4 * 100' 3/4 dock line
- 6* 3' anti-chafing covers
- 4 * 3"x 30 yd rolls gaffer tape
- 2 * 10' x 20' blue plastic tarp
- 2 * 20' X 30' blue plastic tarp
- 2 * 100' 550 paracord lashing rope
- 1 * Battery Backup Sump Pump System
- 1 * 20'x 100' 6 mil plastic for flybridge, helm cover

Off-boat Gear Storage:

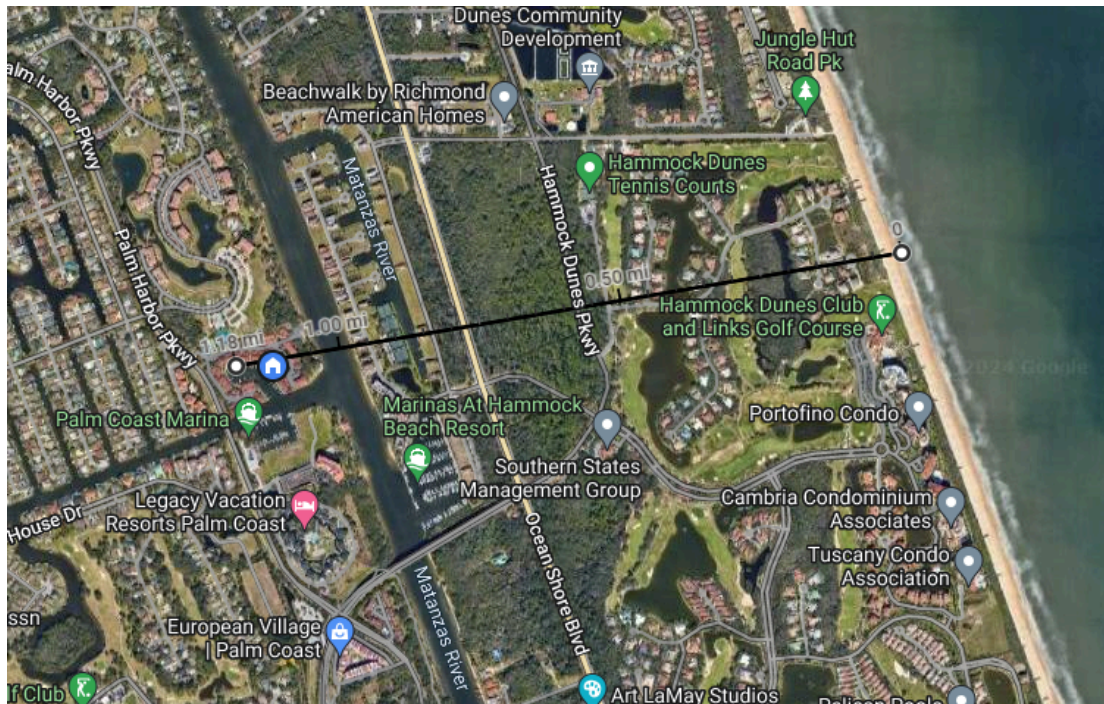
Detached Garage at owners home.

** ***** **, Palm Coast, FL 32137.

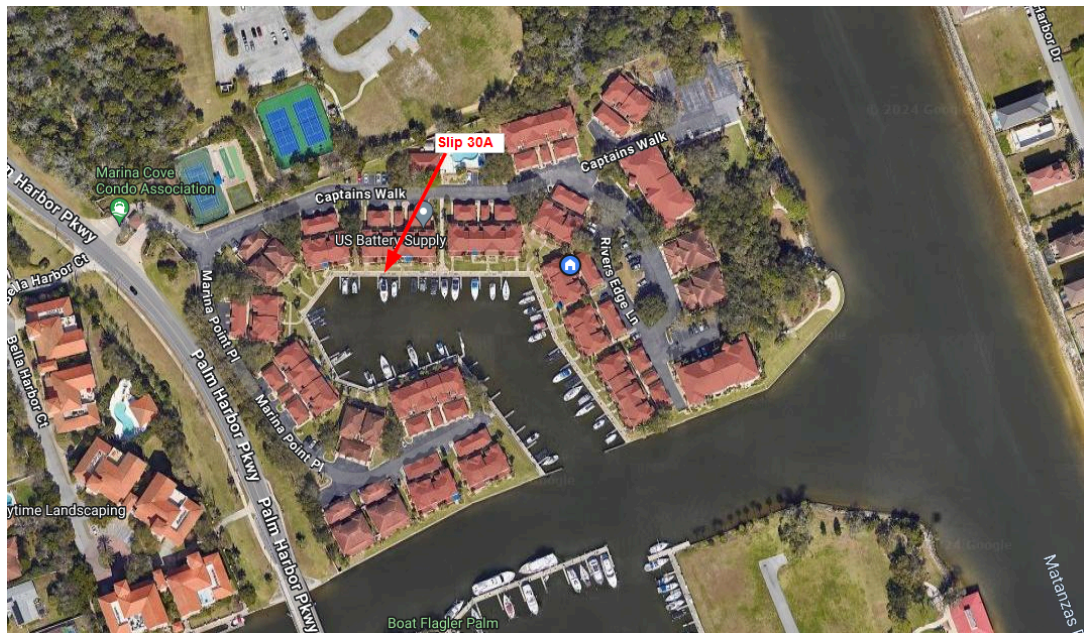
Home Marina:

The Landings at Marina Cove, ## ##### ##, Palm Coast, FL 32137

The home marina is 1.2 miles inland on a canal, off of a tidal river. The normal tide is 1.5 ft. Historic storm surge is 4-6 feet. The marina is sheltered with buildings around and a narrow entry channel.



Slip 30A - The slip has two cleats attached to the sea wall and a finger dock with six pilings. There is also a midship piling on between the slip and the adjacent slip and two bow pilings.



Tropical Storm Plan

Tropical Storm Watch (prepare vessel in home port):

- Ensure that fuel tanks are full.
- Ensure that water tanks are full.
- Ensure that batteries are fully charged.
- Check bilge pumps are operational.
- Clean and remove debris from the bilge.
- Remove cushions and any loose items from the flybridge and store them below.
- Secure folding seating on the flybridge
- Install and secure the flybridge canvas cover
- Remove any loose items from the decks, cockpit, and swim platform.
- Close and secure port & starboard helm doors.
- Check security and seal on opening port holes and skylights.

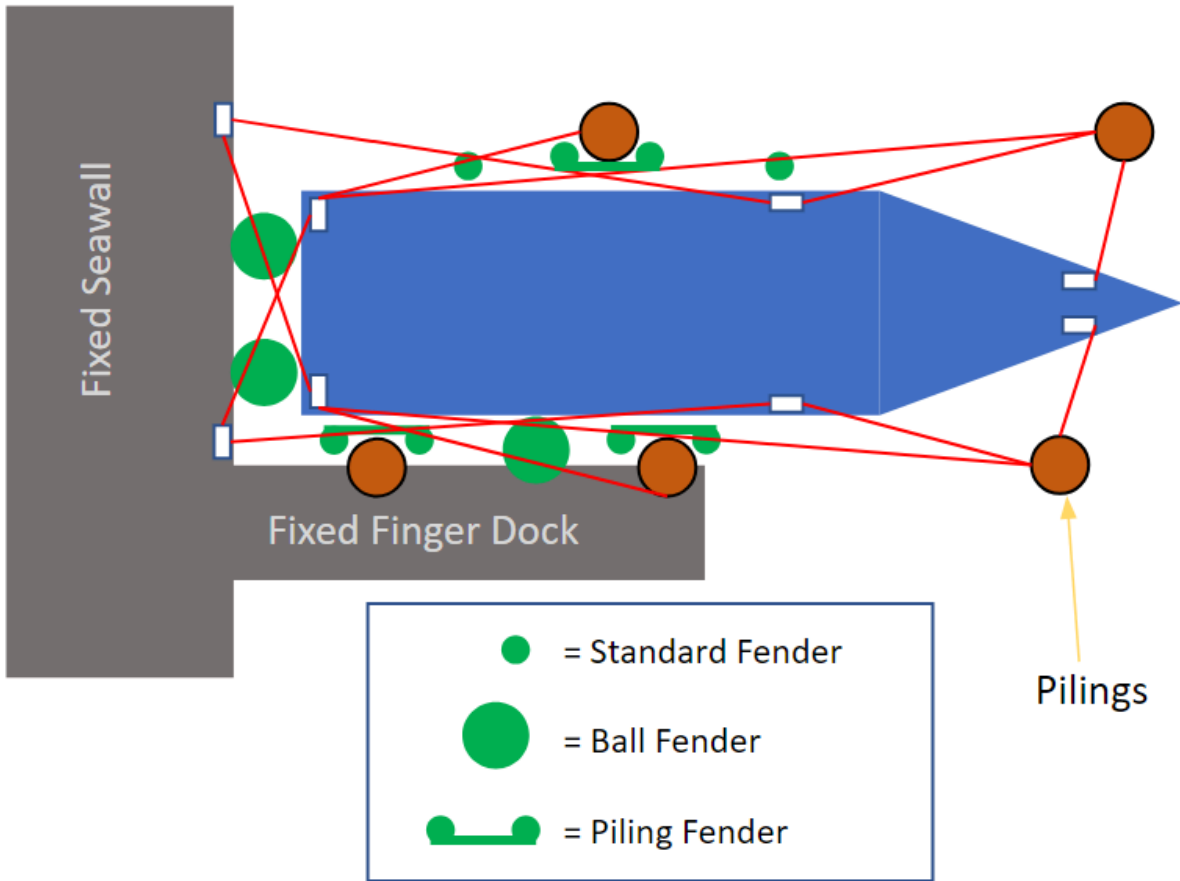
Tropical Storm Warning:

- Remove the dinghy cover and secure the dinghy with extra strapping.
- Insure flybridge electronics covers are installed, seal with tape
- Plastic cover/tape flybridge electronics console
- Secure Flybridge access hatch.
- Secure port & starboard helm doors.
- Remove propane tanks to off-boat storage.
- Remove any non-essential items from lazarette to off-boat storage.
- Remove any loose items from the salon, berths, and heads to off-boat storage.
- Remove food from the refrigerators, disconnect the power

Tropical Storm (Home Marina Rideout)

- Evaluate if boat should be hauled out or can ride out storm in home marina.
- Deploy fenders on port and starboard sides, six fenders per side. Lash fenders to the base of rails.
- Deploy fenders on the stern swim platform.
- Check deck and dock cleats for security.
- Inspect pilings for security
- Rig lines as per tiedown diagram.
- Attach anti-chafing covers to lines at rub points.
- Turn off breakers for all unnecessary electrical devices (refrigerator, lights, etc.)
- Close all through-hull safety valves.
- Lash main helm wheel.
- Disconnect shore power cables and stow
- Deploy and test backup battery-powered bilge pump.
- Final verification that bilge pumps are operational.
- Photo document preparation steps and tiedown.

Home Slip Tiedown Plan



Hurricane Plan

Haul-Out Marina:

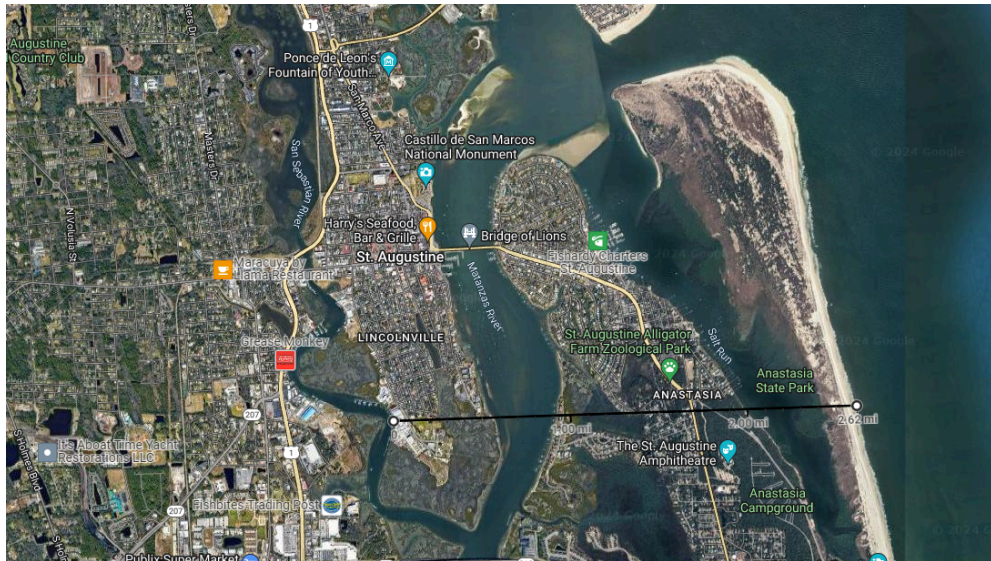
Oasis Marina - St. Augustine Marine Center - 404 Riberia St, St Augustine, FL 32084

Phone: 904-418-#### - Contact: ##### #

A 2024 Hurricane Club Contract (Attached) guarantees a haul-out and tie-down from June 1st, 2024, to November 30th, 2024.

The haul-out marina is 26 miles North of Home Marina on inland river navigation. There is one draw bridge (Crescent Beach Bridge) with a vertical clearance of 28 ft, which does not need to be opened under normal tidal conditions. Travel time from the Home marina to the Haul-out Marina is approximately 2.5 hours.

The Haul-out marina is located on a tidal river, approximately 2.5 miles inland. The haulout contract includes hauling out and tying down the vessel in the boatyard.



Hurricane Watch:

- Perform Tropical Storm Watch/Warning steps if not already complete.
- Ensure that fuel tanks are full
- Contact Haul-out Marina to verify availability and haulout schedule.
- Remove personal items, and cushions to off-boat storage.
- Remove Starlink Antenna to off-site storage.
- If weather conditions are predicted to degrade quickly, move boat to Oasis Marina in St. Augustine to stage for haul-out.

Hurricane Warning (Haul Out):

- Move the boat to the haul-out marina.
- Supervise Haul-out and placement in the storage yard.
- Ensure that secondary bracing is placed on stands to spread the load.
- Ensure that stands are cross-chained for stability.
- Ensure that secondary bracing is placed on stands to spread the load.
- Ensure that straps to ground anchors are secure.
- Photo document preparations, stand placement, and bracing.
- Lower and secure VHF antennas.
- Turn off all electrical devices except the bilge pumps.

Post Storm:

- When able, visit boat to check for any damage.
- Attempt to attach boat to shore power if available.
- Wait for water levels to normalize.
- Wait for USCG to re-open ICW waterway.
- Schedule relaunch with Oasis.
- Return boat to home port.